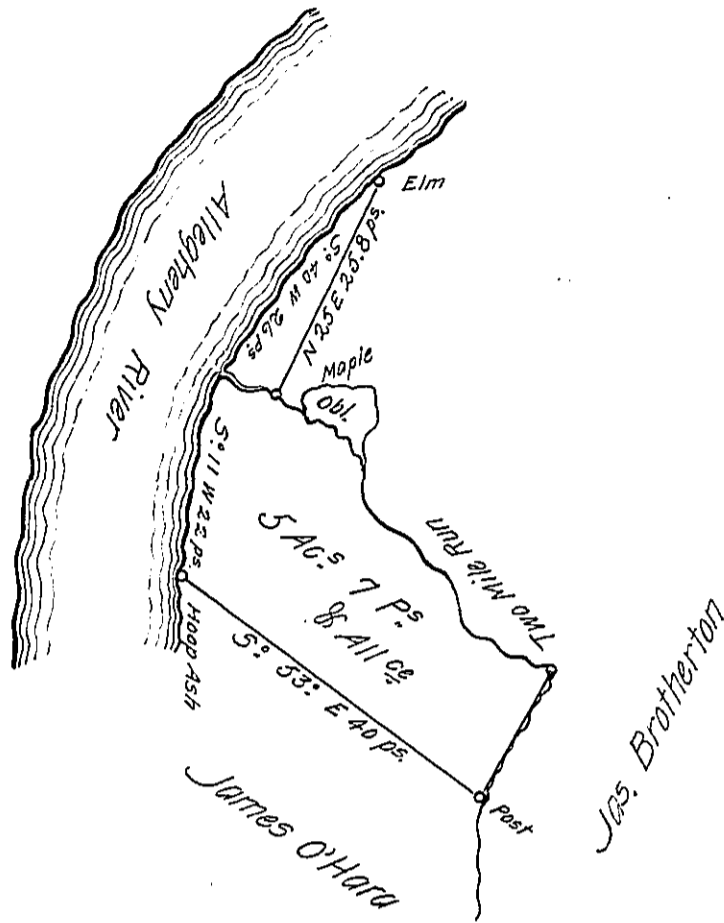


*Courses & Distances  
down the two Mile Run  
from the post to ye Maple*

- N° 29 E. 15 ps.
  - N° 61 W 12 D°
  - N° 2 W 5 D°
  - N° 53 W 12 D°
  - N° 2 W 7 D°
  - N° 65 W 10 D°
- 61.



*A Draught of a Survey called "the Mirror's Discovery" Situate on the Allegheny river in the County of Allegheny Pitt Township, containing 5 Ac. 7 Ps. & the usual Allowce for Roads & C executed on March the 10<sup>th</sup> 1802 in pursuance of a Warrant granted to James Patterson Jun<sup>r</sup> for 5 Ac. dated ye 2<sup>d</sup> Feb<sup>y</sup> 1802.*

*Presley Nevill D.S<sup>r</sup>*

*Sam<sup>l</sup> Cochran Esq<sup>r</sup> S. Gen<sup>l</sup>*

*IN TESTIMONY* that the above is a copy of the original remaining on file in the Department of Internal Affairs of Pennsylvania, made conformably to an Act of Assembly approved the 16th day of February, 1833, I have hereunto set my Hand and caused the Seal of said Department to be affixed at Harrisburg, this tenth day of May 1906.

*Go a c d Brown*  
Secretary of Internal Affairs.